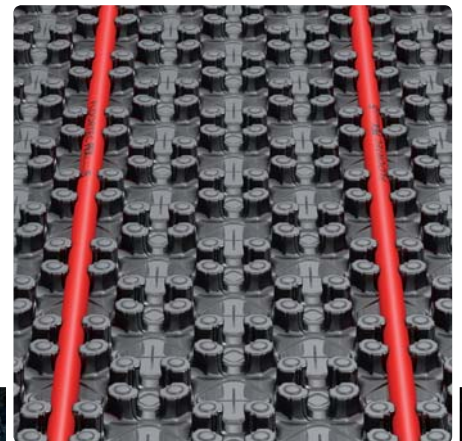
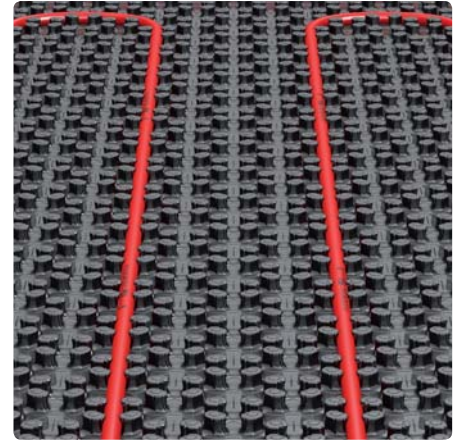


# UNDERFLOOR HEATING SYSTEM.



heatingthroughinnovation.



## CONTENTS.



Introduction .....	03
<b>FLOORTEC PE-Xcellent 5 .....</b>	<b>04</b>
<b>FLOORTEC Complete System Guarantee .....</b>	<b>05</b>
<b>FLOORTEC 3D Stapler system .....</b>	<b>06</b>
<b>FLOORTEC Preformed plate system UNI / Preformed plate light UNI .....</b>	<b>08</b>
<b>FLOORTEC Grid mat system .....</b>	<b>10</b>
<b>FLOORTEC Rail-mounted system .....</b>	<b>11</b>
<b>FLOORTEC Dry system .....</b>	<b>12</b>
<b>FLOORTEC Stainless steel manifold &amp; heat meter sets .....</b>	<b>13</b>
<b>FLOORTEC Wilo Geniux complete distribution system .....</b>	<b>14</b>
<b>FLOORTEC ECO Floor control station .....</b>	<b>16</b>
<b>TWINTEC .....</b>	<b>17</b>
<b>FLOORTEC Room controller system .....</b>	<b>18</b>

**Operating conditions**

The maximum operating temperature when using **FLOORTEC** underfloor heating with **FLOORTEC PE-Xcellent 5** heating pipes is 90°C, at a maximum operating pressure of 8 bar.

**A robust branded product of superior quality**

In addition to its talent for design and enthusiasm for innovation, **VOGEL&NOOT** offers its customers robust products, backed by the most stringent quality standards. The quality and performance details of our underfloor heating systems are continually tested and approved by established, independent European institutions.



## OUR STATEMENT.

**Leading the way in Europe**

**VOGEL&NOOT** is Europe's leading technology partner. The company sets technical standards and its broad product portfolio encompasses radiators, underfloor heating and chimney systems.

Thanks to its constant innovation in the area of energy efficiency, together with its unique design concepts, **VOGEL&NOOT** products generate enthusiasm amongst planners and heating engineers, as well as the users of the rooms that are heated.

**VOGEL&NOOT stands for****Maximum energy efficiency**

As a leading innovator, **VOGEL&NOOT** offers forward-looking heat emission technology for thermal comfort, coupled with climate protection.

**Stylish heating design**

As individually designed heating furniture, the multi-faceted design radiators from **VOGEL&NOOT** add points of interest to modern living areas with their unique surface concept.

**Comprehensive range & service**

As a one-stop provider, **VOGEL&NOOT** not only guarantees a high-quality product range for optimal heat emission solutions, but also offers expert advice and outstanding service.

**heating through innovation.**

FLOORTEC  
PE-XCELLENT 5.



PE-Xcellent 5 Pipe as the innovation of 2013

The **VOGEL&NOOT** PE-Xcellent 5 Pipe brings even more installation confidence for the **FLOORTEC** underfloor heating complete system and makes the job a real pleasure. Not only do consistency in production, the 5-layer system and the internal oxygen barrier of the PE-Xcellent 5 provide the highest level of safety, but they also ensure extremely low wear and tear and outstanding corrosion resistance. What is more, absolute compatibility is assured throughout the **FLOORTEC** underfloor heating system. The **VOGEL&NOOT** PE-Xcellent 5 Pipe fulfils all the ecological and sustainable manufacturing standards to perfection: thanks to a process of beta sterilisation and the fact that no chemical additives or industrial by-products are used whatsoever, the pipe is also completely safe to process.

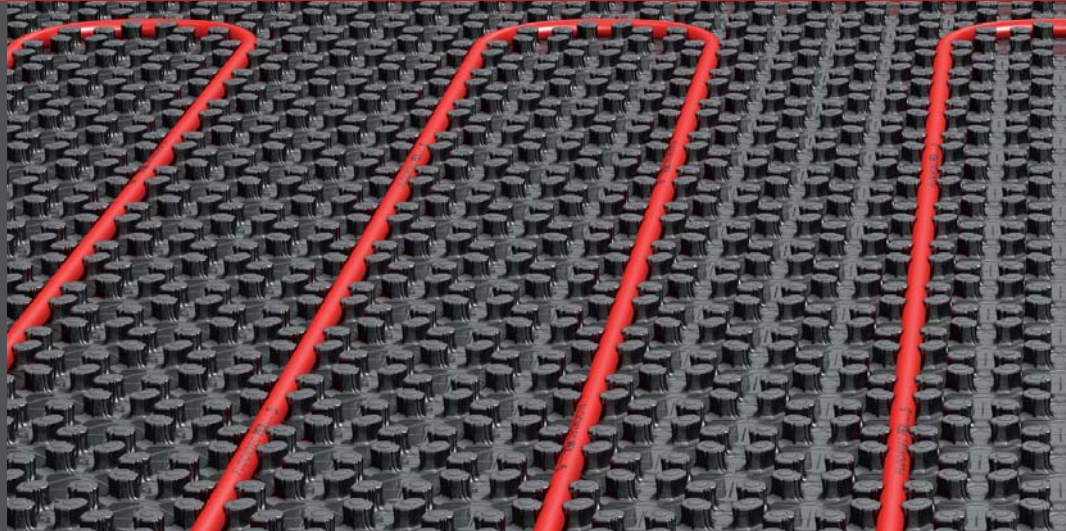
5 major benefits:

1. Solvent-free
2. No chemical additives
3. Highest level of stability
4. Quality guaranteed
5. System compatibility





COMPLETE SYSTEM  
GUARANTEE.



*“The whole is more than the sum of its parts”*

The high-quality **FLOORTEC** complete underfloor heating systems, with components from **VOGEL&NOOT** that complement one another perfectly, are clearly superior to any system you could put together yourself.

Nevertheless, quality defects caused by improper combination with third-party components are on the rise, which significantly disrupts the compatibility of the system. From a legal point of view, the damage incurred must then be rectified by the installation company.

The highly-flexible **FLOORTEC** complete underfloor heating systems from **VOGEL&NOOT** offer an array of benefits. Why not see for yourself?

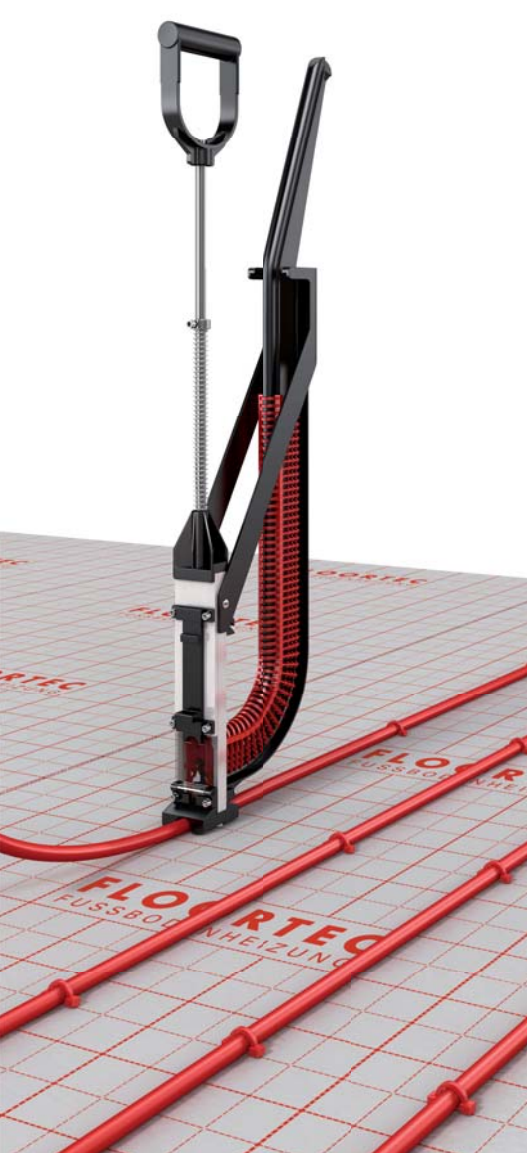


**The quality of the parts determines the performance of the whole.**

If your domestic installations are to function to perfection, you need systems that are flawless.



## FLOORTEC 3D STAPLER SYSTEM.



FLOORTEC 3D Tackertool with a handy clip magazine.

The **FLOORTEC 3D Stapler System** offers outstandingly flexible underfloor heating. It comprises a helpfully defined laying matrix in 50 mm steps and is tacked exactly and quickly with U-clips to the noise insulation layer below.

The **FLOORTEC 3D Stapler System** also acts as top-quality noise and thermal insulation. Integrated textile tape gives the insulation an extremely tight hold on the heating pipe fixture, and the insulation is capable of providing good resistance to foot traffic, coupled with high impact resistance during installation. The underfloor heating pipe is fixed in place inside the insulation layer using a special staple nail anchorage system. The **FLOORTEC 3D Stapler System** is the ideal solution for the fast and easy fitting of underfloor heating systems, even across large surface areas.



FLOORTEC clips are available in three sizes and can be attached using a single universal tackertool.



FLOORTEC PE-Xcellent 5 Pipe or aluminium composite pipe attached using a stapler.





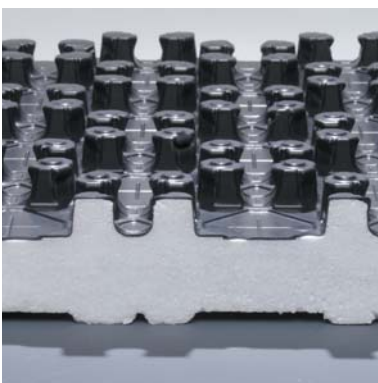
**Your benefit:** The **FLOORTEC 3D Stapler System** components are all matched perfectly to each other and guarantee a standardised, precise custom-fit installation using a stapler.

FLOORTEC  
PREFORMED PLATE  
SYSTEM UNI.

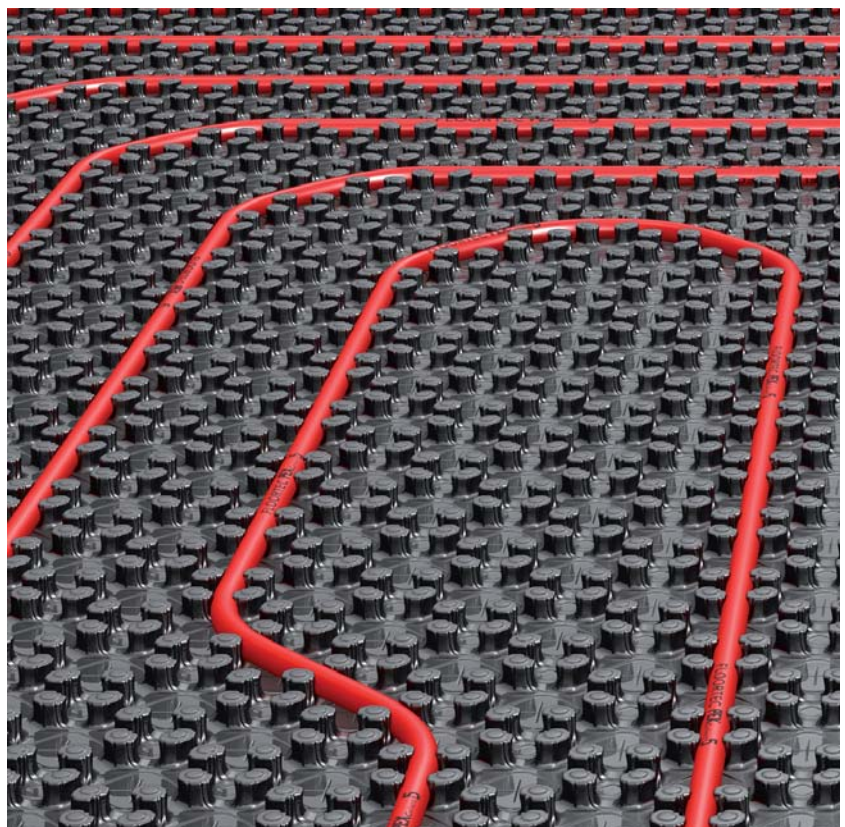


No other method for laying underfloor heating is simpler or safer. With the **FLOORTEC Preformed plate system UNI**, it takes only four working steps to assemble the system – without the need to use any tools during the installation.

The support on which the pipes are laid is equipped with foam studs that hold the pipes in place. The heating pipe can be pressed into these studs with ease using your foot. Thanks to the **FLOORTEC Preformed plate system UNI**, laying underfloor heating has never been easier.



FLOORTEC preformed plate 30-2.



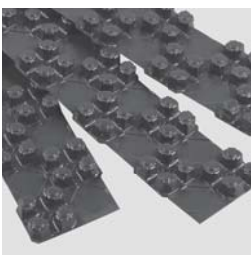
**Your benefit:** The system features a precise installation pattern in a 60 mm laying matrix. This achieves optimum heat distribution, similar to the calculated values.



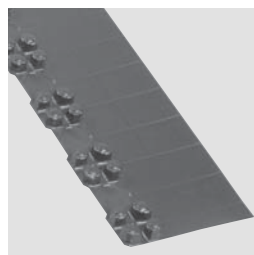


FLOORTEC  
PREFORMED PLATE  
LIGHT.

The **FLOORTEC preformed plate Light** is always used after insulation has already been laid by the installer. It offers all the benefits of the preformed plate system UNI, but can be used regardless of the insulation located beneath.



**FLOORTEC**  
Connecting strips



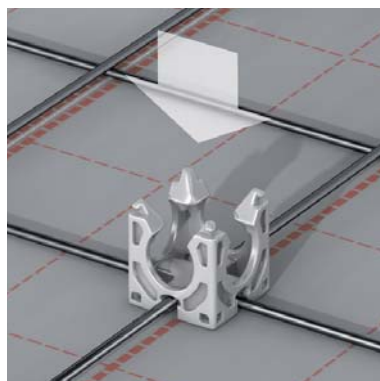
**FLOORTEC**  
Doorway strip

## FLOORTEC GRID MAT SYSTEM.



The **FLOORTEC Grid mat system** is used regardless of the type of the insulation located underneath. The grid mat is laid out over the cover sheeting and the pipes are attached to the mat using what are known as grid mat clips. Grid mats are joined together using mat connectors to form a unified surface.

- Clips for pipe dimensions 16/17
- No bending needed for the installation work
- A faster and more efficient installation



FLOORTEC Grid mat with clip

### Your benefit:

Thanks to the innovative mat connection technology and the grid mat designs available with a grid matrix of 50 x 50 mm, 100 x 100 mm or 150 x 150 mm, all of the usual installation spacings can be achieved.



FLOORTEC  
RAIL-MOUNTED  
SYSTEM.



FLOORTEC mounting rail with retention pin.



FLOORTEC mounting rail with PE-Xcellent 5 Pipe.

The **FLOORTEC Rail-mounted system** is impressively easy to handle, consisting of elements measuring 1 m in length, which can be “infinitely” expanded using the “click” system. The mounting rails are fixed to the ground over the covering sheet using retention pins.

**Your benefit:** The **FLOORTEC Rail-mounted system** can be used regardless of the type of insulation located underneath and is perfectly suited to large surfaces and heavy loads. The pattern made up of 50 mm gaps can be used with all pipes measuring 14, 16, 17 and 20 mm.



FLOORTEC  
DRY SYSTEM.



Thanks to the ultra-modern **FLOORTEC Dry system**, on-site humidity is eliminated and screed expansion joints are no longer required. This shortens the building time by several weeks. The **FLOORTEC Dry system** allows an extremely thin floor construction in combination with all top layers, and guarantees the most rapid temperature control, even heat distribution and short heating-up times. Thanks to the handy, compact dimensions of the components, rapid installation of the underfloor heating is guaranteed. The **FLOORTEC Dry system** is available with a fixed spacing between pipes of 12.5 and 25 cm.

**Your benefit:** The **FLOORTEC Dry system** is the best solution for old buildings, due to the low construction height. You will save energy and enjoy a healthy and welcoming environment – with a clear conscience, safe in the knowledge that you are protecting the environment.



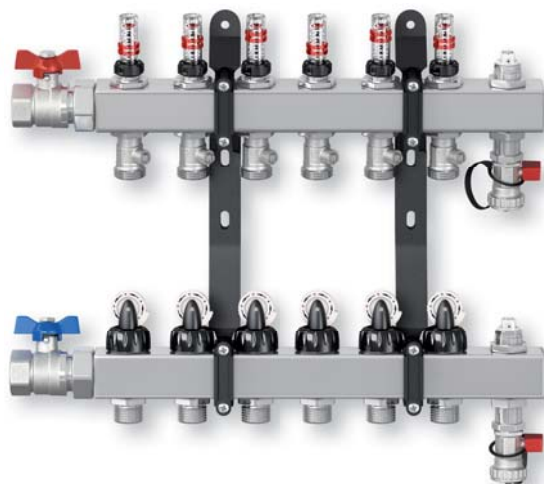


## FLOORTEC STAINLESS STEEL MANIFOLD & HEAT METER SETS.

The **FLOORTEC Stainless steel manifold** forms the heart of every underfloor heating system. Due to its compact design, it can be used with all systems and its built-in flow ratemeter (topmeter) optimises the response of the heating system to the current room temperature.

Superb appearance and sophisticated technology are combined in the **FLOORTEC Stainless steel manifold**. It represents the noble art of heat distribution and is supplied as a homogenous unit in a package – ready to connect and operate.

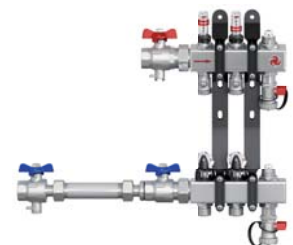
Nowadays, modern living facilities require increasingly individual solutions. This requirement has become particularly important in the case of blocks of flats. That is why **VOGEL&NOOT** now offers heat meter sets in horizontal and vertical designs as well as in-wall- and on-wall cabinets for the stainless steel manifold.



**Your benefit:** The **FLOORTEC Stainless steel manifold** is easy to connect and is compatible with all systems, thanks to the  $\frac{3}{4}$ " Euro-Cone connection.



Vertical design



Horizontal design

**Your benefit:** With this innovative solution, individual billing for heating is made even easier. It is fully compatible with the entire **FLOORTEC underfloor heating system**. The ball valves and thermo-wells are compatible with the most popular heat meter suppliers.

FLOORTEC & Wilo-Geniax.

The revolution in heating technology:  
FLOORTEC with Wilo-Geniax

**Intelligently simple and simply intelligent:** the **Wilo-Geniax** decentralised pump system is revolutionising heating technology. The traditional supply-based heating system that runs continuously, independently of energy demand, has had its day. With **Wilo-Geniax** however, heat is only supplied when and where it is specifically required.



The innovative energy efficiency solution in collaboration between **VOGEL&NOOT FLOORTEC** and Wilo-Geniax.



**Reduction in energy costs**

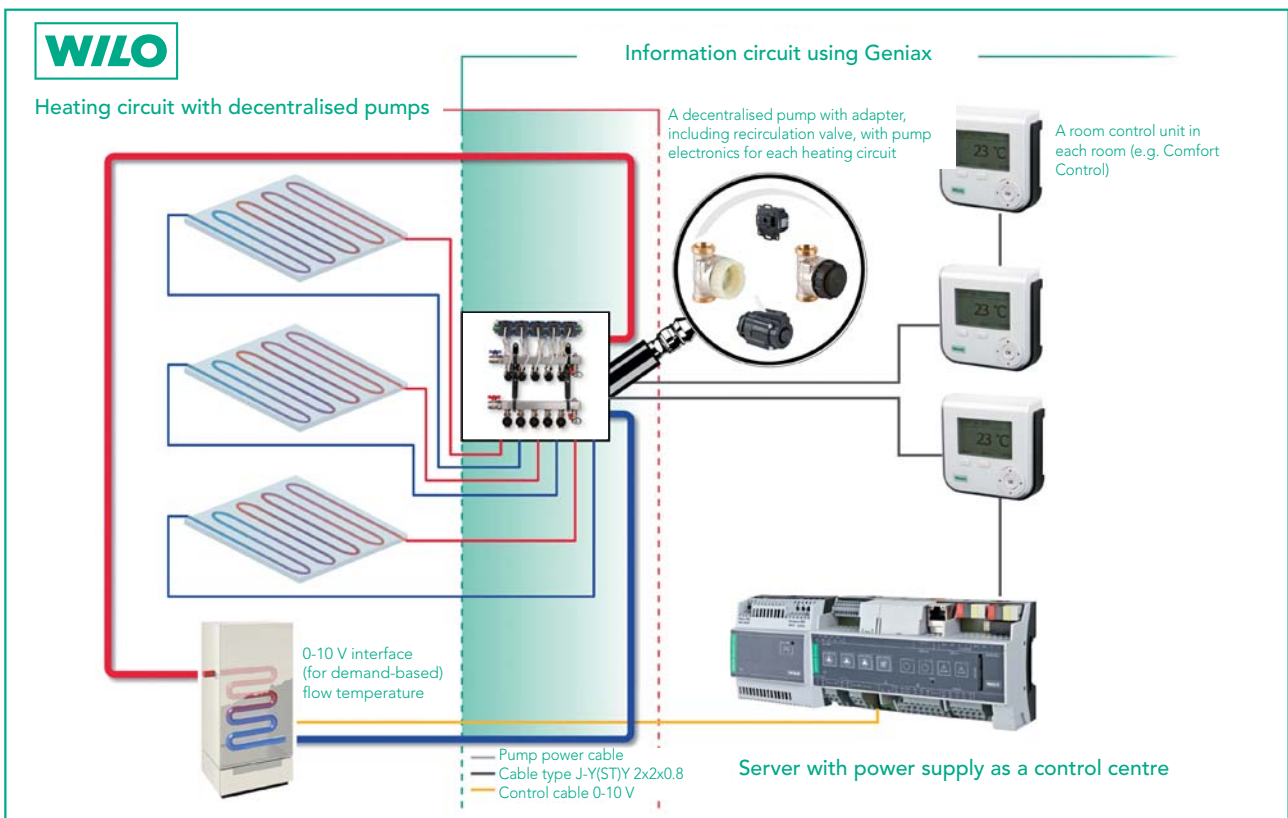
With a complete distribution system you could save an average of 20% on your heating costs, compared to the cost of running a conventional heating system.



**Reduction in CO<sub>2</sub>**

Since **FLOORTEC** underfloor heating systems use less energy, they make a positive contribution to climate protection.

Wilo-Geniax. The decentralised pump system.



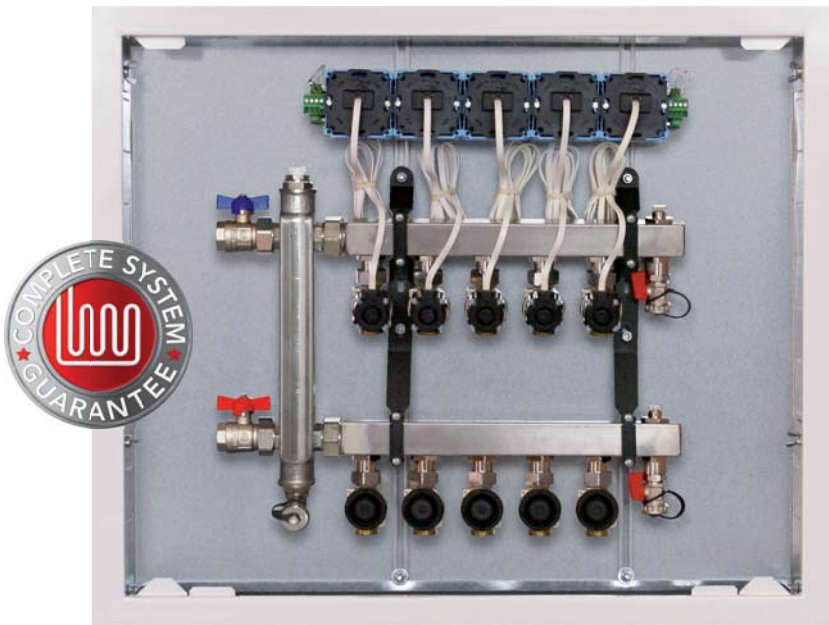




A MATCH MADE  
IN HEAVEN.

### FLOORTEC system manifold with integrated Wilo-Geniax decentralised pump system.

Innovative mini-pumps in the **FLOORTEC** underfloor heating manifold replace traditional actuators. The **Wilo-Geniax** decentralised pump system ensures that every heating circuit is supplied with heat only when it is required. Not only does this save on average 20% on heating energy, but operating the system could not be easier. Living spaces are heated in a targeted manner to the desired temperature at the exact time desired with just a push of a button. **It has never been so simple to save energy.**



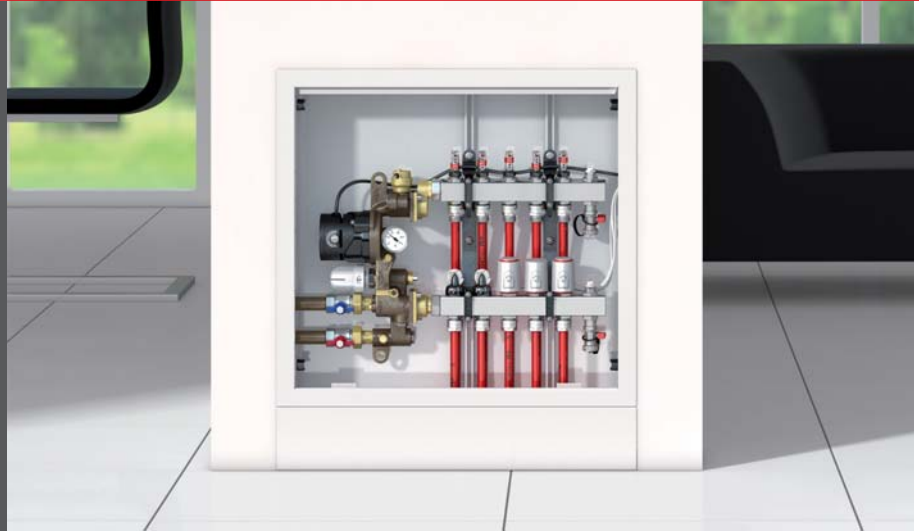
#### Complete manifold benefits:

- Automatic hydraulic balancing
- Fail-safe retention of system data
- Installation of the pump adapter with simple connection and assembly technology
- Pump can be installed and removed when the system is filled, without the use of tools and without water escaping
- Superior controllability
- Significant reduction in power consumption
- Easy configuration of the server using programming software\*
- Suitable for integration into building automation\*

**Your benefit:** The newly-developed **FLOORTEC** complete manifold with integrated **Wilo-Geniax** pumps impresses as a result of its sophisticated technology and ease of installation. As it is entirely pre-assembled, including the wired pump electronics, individual requirements and designs can be delivered according to the customer's instructions and specifications.

\*Note: Electronic modules such as servers, power supply, bus coupler and room control units are not supplied by VOGEL&NOOT. However, these are available from stock at a wholesale partner of your choice. Commissioning will be carried out by Wilo-Geniax project management.

## ECO FLOOR CONTROL STATION.



The **FLOORTEC** ECO Floor control station consists of a completely ready-to-connect mixing module to control the flow temperature of underfloor heating systems. It is only suitable for connecting to the **FLOORTEC** stainless steel manifold. The **FLOORTEC** ECO floor control station is designed in order to connect a low-temperature underfloor heating system to an existing boiler circuit.



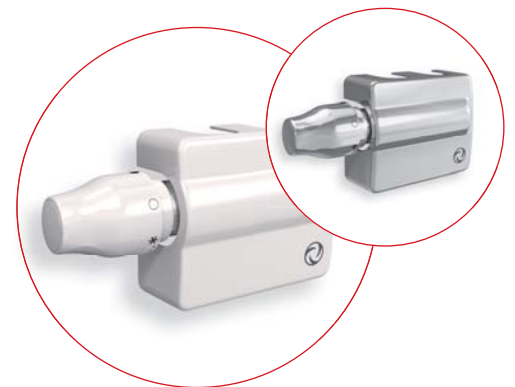
**Your benefit:** The **FLOORTEC ECO Floor control station** is completely pre-wired. A high-efficiency pump (power consumption 35 W) belonging to energy efficiency class A is included.



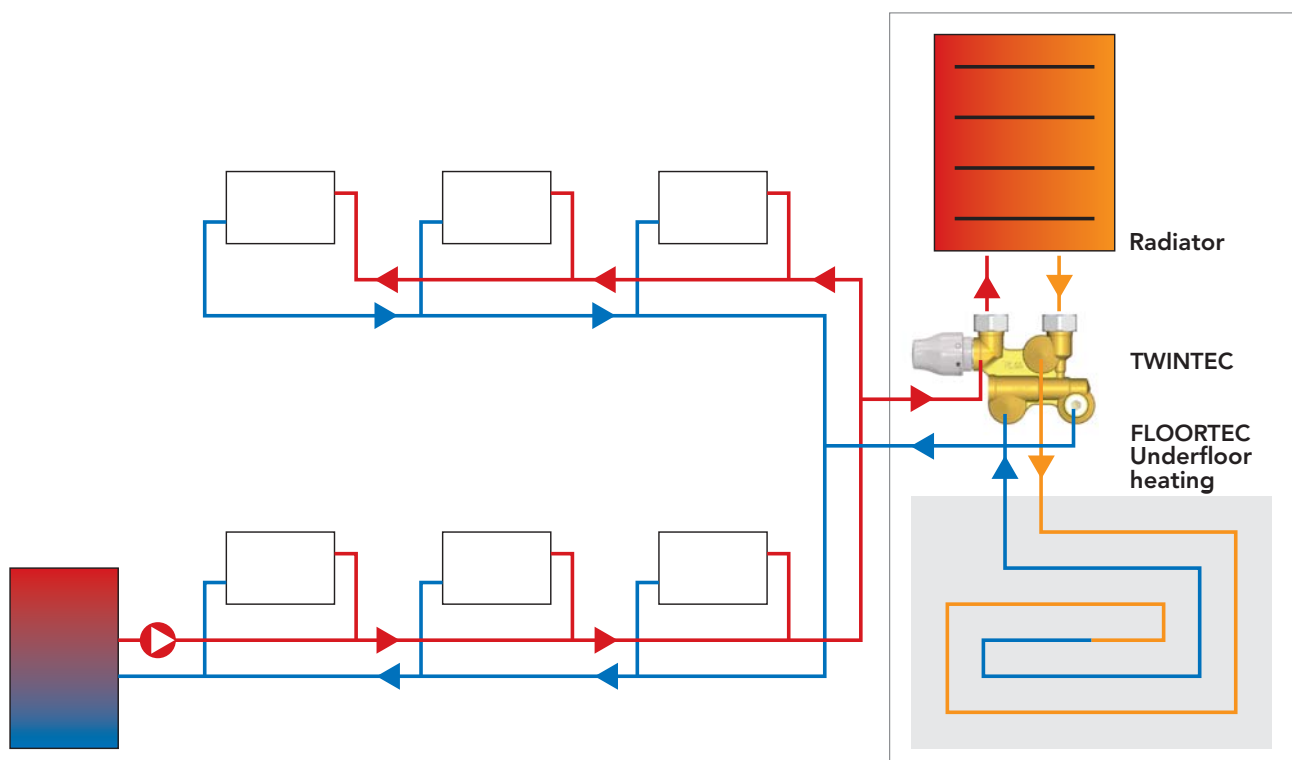
TWINTEC.

**TWINTEC** connects the radiator to the underfloor heating (max. 10m<sup>2</sup>) and combines efficient controllability with a high degree of comfort. A unique thermostat head provides conflict-free control and allows the user to manage the system conveniently and easily. Thanks to the serial connection, the underfloor heating is supplied with a suitable temperature, once the radiator has come up to temperature. A built-in return temperature limiter provides additional protection at 45 °C! It guarantees the flow through the design radiators, even when the return temperature limiter is activated.

**Your benefit:** **TWINTEC** is suitable for new buildings as well as those undergoing renovation, and can be combined with a variety of radiators.



Available in white or chrome.





## FLOORTEC ROOM CONTROLLER SYSTEM.

In order to facilitate installation, the **FLOORTEC room controller system** incorporates wired room controllers, consisting of a flush-mounted base that is permanently installed, and pluggable control panel – enabling the controllers to be removed with ease at any time.

**Your benefit:** An invaluable advantage for all painting and wallpapering jobs, as the work becomes easier to carry out and the controllers can be removed, so they are protected from damage and dirt. The protection cap that is also supplied also protects the flush-mounted base.



Digital room thermostat



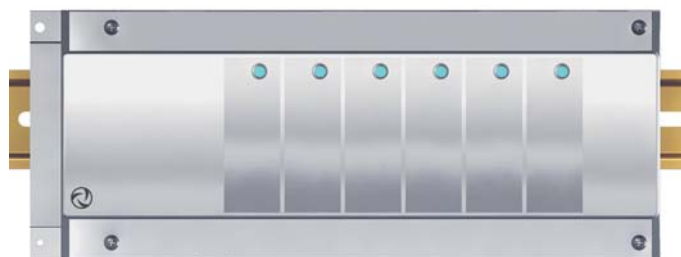
Touchscreen room thermostat



Analogue room thermostat



Actuator



Connection module



